



MACHINE TOOLS EQUIPMENTS

150.3

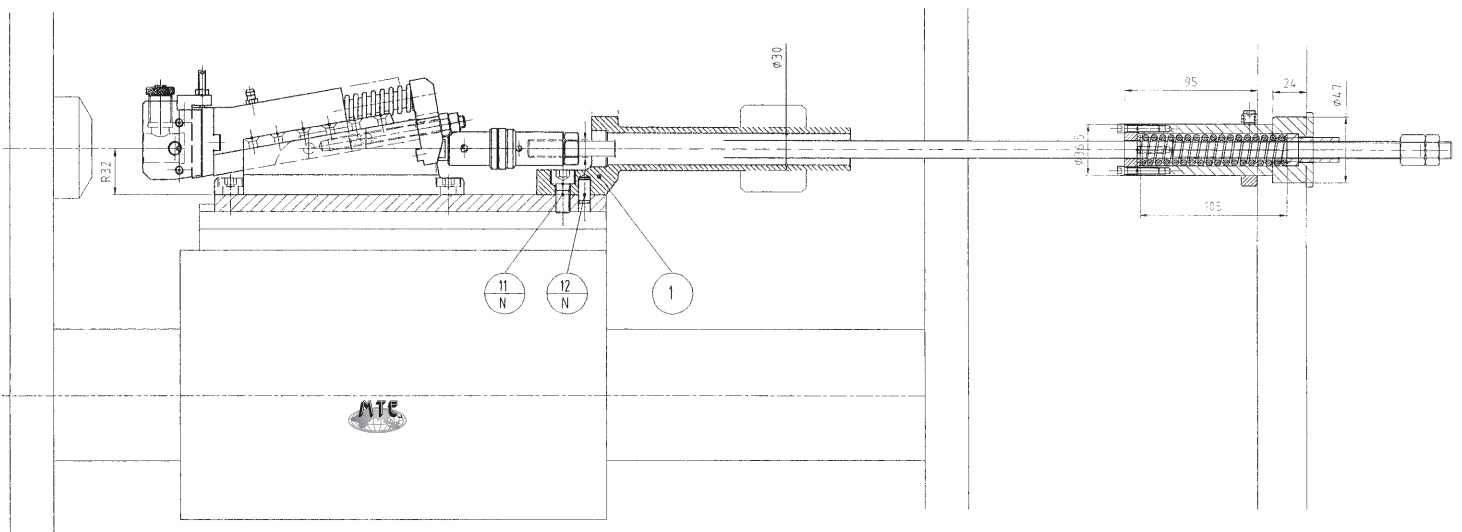
ABHEBENDER AUSDREHAPPARAT **D**

CARRO PER RECESSI INDIPENDENTE CON PASSATA **I**

INDEPENDENT CARRIAGE FOR RECESS WITH AXIAL TURNING RAMP **GB/USA**

CHARIOT POUR NICHES INDÉPENDANT AVEC PASSE **F**

CARRO PARA CAVIDADES INDEPENDIENTE CON PASADA **S**



INCLINAZIONE

8° - 10° - 15° (a richiesta 8° - 15°)

INCLINATION

8° - 10° - 15° (on request 8° - 15°)

TABELLA PAGINA SEGUENTE

TABLE NEXT PAGE

A RICHIESTA PER ALTRI TIPI DI MACCHINA - ON REQUEST FOR OTHER TYPES OF MACHINE

A RICHIESTA ALTRE ATTREZZATURE/FURTHER EQUIPMENTS ON REQUEST

ARTICOLO ARTICLE	MACCHINA MACHINE	D UTENSILE D TOOL	B
WICKMAN			
150.10.30	5/8"	20/25	20
150.17.30	7/8" - 5 M	20/25	25
150.19.30	1" 3/4 - 5 M	20/25	25
150.20.30	1"	20/25	25
150.29.30	32 - 8	20/25	25
150.30.30	1" 3/4-3/8	20/25	25
150.38.30	1" 3/8 - 5 M	20/25	25
150.40.30	2" 1/4	20/25	25
150.41.30	2" 5/8	20/25	25
150.50.30	3" 1/2	20/25	25
150.58.30	3" 1/4	20/25	25
GILDEMEISTER			
150.09.30	AS 12	20	20
150.11.30	AS 16 - GM 16	20	20
150.15.30	AS 20 - GS 20 - GM 20	14/20	20
150.18.30	AS 22 - AS 25	20/25	20
150.27.30	AA 32	20/25	25
150.31.30	AS 32	20/25	25
150.32.30	AS 40 - AS 48	20/25	25
150.36.30	AA 48	20/25	25
150.44.30	AS 55 - 67	20/25	25
150.47.30	GM 35 - GM 42	20/25	25
150.51.30	AA 67	20/25	25
150.56.30	GM 32	20/25	25
150.63.30	AS 63	20/25	25
150.69.30	GS 50 - 51	20/25	25
150.70.30	GM 26	20/25	25
150.82.30	AS 82	20/25	25
150.83.30	AS 100	25	25
MORI SAY - EUROTURN			
150.14.30	6/20	20/25	20
150.24.30	6/25 - 6/32	20/25	20
150.28.30	6/42	20/25	25
150.53.30	8/32	20/25	25
150.67.30	8/42	20/25	25
INDEX			
150.13.30	MS 25	20/25	20
150.34.30	KS 25	20/25	20
150.35.30	KS 42	20/25	20
150.60.30	KS 18	20/25	20
150.61.30	KS 32	20/25	20
150.62.30	KS 50	20/25	20

ARTICOLO ARTICLE	MACCHINA MACHINE	D UTENSILE D TOOL	B
SCHÜTTE			
150.08.30	SF 13	20/25	25
150.21.30	SE 16 - SF 20	20/25	25
150.22.30	SE 25	20/25	20
150.23.30	SF 40 - SF 42	20/25	25
150.33.30	SD 25 - SD 32	20/25	25
150.42.30	SD 50	20/25	25
150.43.30	SD 63 - SD 80	20/25	25
150.46.30	SF 26 - SF 32	20/25	25
150.48.30	AD 40	20/25	25
150.49.30	SF 51	20/25	25
150.54.30	SF 67	20/25	25
150.55.30	SF 26 L	20/25	25
150.73.30	AG 20	20/25	25
150.81.30	SF 81	20/25	25
150.84.30	AF 42/51	20/25	25
150.85.30	AF 26/32	20/25	25
PITTLER			
150.25.30	PRB 8/25	20/25	20
150.26.30	PRB 8/32 - PRC 6/32	20/25	25
150.37.30	DAM 6/50	20/25	20
150.39.30	DAM 8/32	20/25	20
150.45.30	PRB 6/50 - PRC 6/50	20/25	20
150.52.30	PRB 36/6	20/25	20
150.64.30	PRC 36/6	20/25	20
150.65.30	DAM 6/32	20/25	20
150.71.30	PRC 100/4-72/6-50/8	20/25	20
BSA			
150.59.30	2"	20/25	20
150.68.30	2" 1/4	20/25	20
ACME GRIDLEY			
150.12.30	16 m/m	20/25	20
150.57.30	1" 1/4 - 6 M	20/25	20
150.74.30	1" 5/8	20/25	20
TOS / AN			
150.88.30	6/25 A	20/25	20
150.89.30	6/40 A	20/25	20
150.90.30	6/63 A	20/25	20
NEW BRITAIN			
150.91.30	52		
150.96.30	62		