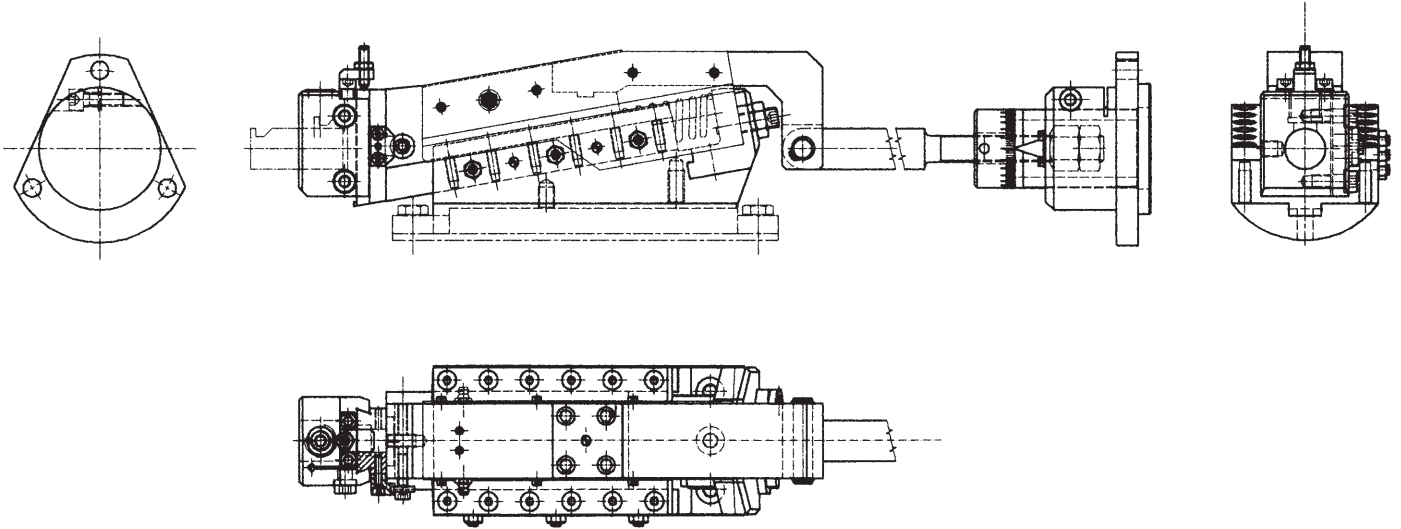




MACHINE TOOLS EQUIPMENTS

150.2

INNENEINSTECHSCHLITTEN F. WICKMAN **D**
 CARRO PER RECESSI **I**
 CARRIAGE FOR RECESS **GB/USA**
 CHARIOT POUR NICHES **F**
 CARRO PARA CAVIDADES **S**



RADIAL MOTION	CORSA RADIALE	10°	7	A richiesta/On request
		15°	11	
AXIAL MOTION	CORSA ASSIALE	10°	40	A richiesta/On request
		15°	40	

TABELLA PAGINA SEGUENTE

TABLE NEXT PAGE

A RICHIESTA PER ALTRI TIPI DI MACCHINA - ON REQUEST FOR OTHER TYPES OF MACHINE



MACHINE TOOLS EQUIPMENTS

150.2

INNENEINSTECHSCHLITTEN F. WICKMAN **D**
 CARRO PER RECESSI **I**
 CARRIAGE FOR RECESS **GB/USA**
 CHARIOT POUR NICHES **F**
 CARRO PARA CAVIDADES **S**

A RICHIESTA ALTRE ATTREZZATURE/FURTHER EQUIPMENTS ON REQUEST

ARTICOLO ARTICLE	MACCHINA MACHINE	D UTENSILE D TOOL
---------------------	---------------------	----------------------

WICKMAN

150.10.20	5/8"	20/25
150.17.20	7/8" - 5 M	20/25
150.19.20	1" 3/4 - 5 M	20/25
150.20.20	1"	20/25
150.29.20	32 - 8	20/25
150.30.20	1" 3/4-3/8	20/25
150.38.20	1" 3/8 - 5 M	20/25
150.40.20	2" 1/4	20/25
150.41.20	2" 5/8	20/25
150.50.20	3" 1/2	20/25
150.58.20	3" 1/4	20/25

GILDEMEISTER

150.09.20	AS 12	20/25
150.11.20	AS 16 - GM 16	20/25
150.15.20	AS 20 - GS 20 - GM 20	20/25
150.18.20	AS 22 - AS 25	20/25
150.27.20	AA 32	20/25
150.31.20	AS 32	20/25
150.32.20	AS 40 - AS 48	20/25
150.36.20	AA 48	20/25
150.44.20	AS 55 - 67	20/25
150.47.20	GM 35 - GM 42	20/25
150.51.20	AA 67	20/25
150.56.20	GM 32	20/25
150.63.20	AS 63	20/25
150.69.20	GS 50 - 51	20/25
150.70.20	GM 26	20/25
150.82.20	AS 82	25
150.83.20	AS 100	25

MORI SAY - EUROTURN

150.14.20	6/20	20/25
150.24.20	6/25 - 6/32	20/25
150.28.20	6/42	20/25
150.53.20	8/32	20/25
150.67.20	8/42	20/25

INDEX

150.13.20	MS 25	20/25
150.34.20	KS 25	20/25
150.35.20	KS 42	20/25
150.60.20	KS 18	20/25
150.61.20	KS 32	20/25
150.62.20	KS 50	20/25

ARTICOLO ARTICLE	MACCHINA MACHINE	D UTENSILE D TOOL
---------------------	---------------------	----------------------

SCHÜTTE

150.08.20	SF 13	20/25
150.21.20	SE 16 - SF 20	20/25
150.22.20	SE 25	20/25
150.23.20	SF 40 - SF 42	20/25
150.33.20	SD 25 - SD 32	20/25
150.42.20	SD 50	20/25
150.43.20	SD 63 - SD 80	20/25
150.46.20	SF 26 - SF 32	20/25
150.48.20	AD 40	20/25
150.49.20	SF 51	20/25
150.54.20	SF 67	20/25
150.55.20	SF 26 L	20/25
150.73.20	AG 20	20/25
150.81.20	SF 81	20/25
150.84.20	AF 42/51	20/25
150.85.20	AF 26/32	20/25

PITTLER

150.25.20	PRB 8/25	20/25
150.26.20	PRB 8/32 - PRC 6/32	20/25
150.37.20	DAM 6/50	20/25
150.39.20	DAM 8/32	20/25
150.45.20	PRB 6/50 - PRC 6/50	20/25
150.52.20	PRB 36/6	20/25
150.64.20	PRC 36/6	20/25
150.65.20	DAM 6/32	20/25
150.71.20	PRC 100/4-72/6-50/8	20/25

BSA

150.59.20	2"	20/25
150.68.20	2" 1/4	20/25

ACME GRIDLEY

150.12.20	16 m/m	20/25
150.57.20	1" 1/4 - 6 M	20/25
150.74.20	1" 5/8	20/25

TOS / AN

150.88.20	6/25 A	20/25
150.89.20	6/40 A	20/25
150.90.20	6/63 A	20/25

NEW BRITAIN

150.91.20	52	
150.96.20	62	

A RICHIESTA PER ALTRI TIPI DI MACCHINA - ON REQUEST FOR OTHER TYPES OF MACHINE