



MACHINE TOOLS EQUIPMENTS

064

HÖHENEINSTELLBARER STECHSTAHLHALTER MIT PRISMATISCHER STIRNKLEMMUNG UND RUNDER AUFNAHME

D

PORTAUTENSILE MODULARE CON REGOLAZIONE ASSIALE RADIALE, PRISMATICI PIATTI

I

MODULAR TOOLHOLDER WITH AXIAL/RADIAL ADJUSTMENT FLAT BOX ANGLE - PLATE

GB/USA

PORTE-OUTIL MODULAIRE A REGLAGE AXIAL RADIAL PORTE-OUTIL, PRISMATIQUE PLAT

F

PORTAUTIL MODULAR CON REGULACION AXIAL RADIAL PORTAUTILES, PRISMATICOS PLANOS

S

ONLY U.S.A. MARKET

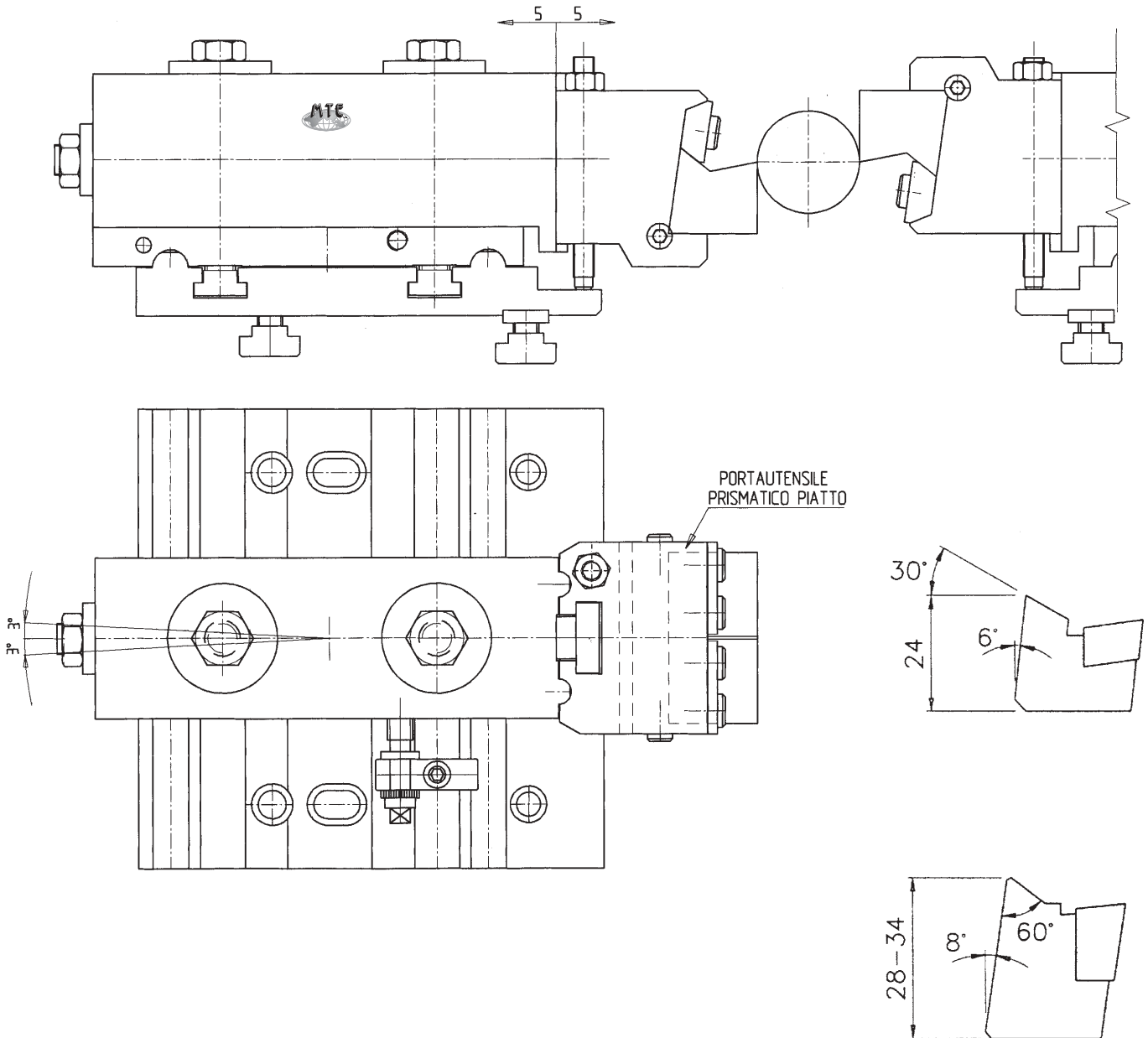


TABELLA PAGINA SEGUENTE

TABLE NEXT PAGE

A RICHIESTA PER ALTRI TIPI DI MACCHINA - ON REQUEST FOR OTHER TYPES OF MACHINE



064

HÖHENEINSTELLBARER STECHSTAHLHALTER MIT PRISMATISCHER STIRNKLEMMUNG UND RUNDER AUFNAHME **D**
 PORTAUTENSILE MODULARE CON REGOLAZIONE ASSIALE RADIALE, PRISMATICI PIATTI **I**
 MODULAR TOOLHOLDER WITH AXIAL/RADIAL ADJUSTMENT FLAT BOX ANGLE - PLATE **GB/USA**
 PORTE-OUTIL MODULAIRE A REGLAGE AXIAL RADIAL PORTE-OUTIL, PRISMATIQUE PLAT **F**
 PORTAUTIL MODULAR CON REGULACION AXIAL RADIAL PORTAUTILES, PRISMATICOS PLANOS **S**

A RICHIESTA ALTRE ATTREZZATURE/FURTHER EQUIPMENTS ON REQUEST

ARTICOLO ARTICLE	MACCHINA MACHINE	d	UTENSILE b TOOLS b
WICKMAN			
064.10.00	5/8"	6°	24.5
064.17.00	7/8" - 5 M	8°	28
064.19.00	1" 3/4 - 5 M	8°	34
064.20.00	1"	8°	28
064.29.00	32 - 8	8°	34
064.30.00	1" 3/4-3/8	8°	34
064.38.00	1" 3/8 - 5 M	8°	34
064.40.00	2" 1/4	8°	34
064.41.00	2" 5/8	8°	34
064.50.00	3" 1/2	8°	34
064.58.00	3" 1/4	8°	34
GILDEMEISTER			
064.09.00	AS 12	6°	24
064.11.00	AS 16 - GM 16	6°	24
064.15.00	AS 20 - GS 20 - GM 20	6°	24
064.18.00	AS 22 - AS 25	8°	34
064.27.00	AA 32	8°	34
064.31.00	AS 32	8°	34
064.32.00	AS 40 - AS 48	8°	34
064.36.00	AA 48	8°	34
064.44.00	AS 55 - 67	8°	34
064.47.00	GM 35 - GM 42	8°	34
064.51.00	AA 67	8°	34
064.56.00	GM 32	8°	34
064.63.00	AS 63	8°	34
064.69.00	GS 50 - 51	8°	34
064.70.00	GM 26	6°	24
064.82.00	AS 82	8°	34
064.83.00	AS 100	8°	34
MORI SAY - EUROTURN			
064.14.00	6/20	6°	24
064.24.00	6/25 - 6/32	8°	28
064.28.00	6/42	8°	34
064.53.00	8/32	8°	34
064.67.00	8/42	8°	34
INDEX			
064.13.00	MS 25	6°	24
064.34.00	KS 25	8°	34
064.35.00	KS 42	8°	34
064.60.00	KS 18	8°	34
064.61.00	KS 32	8°	34
064.62.00	KS 50	8°	34

ARTICOLO ARTICLE	MACCHINA MACHINE	d	UTENSILE b TOOLS b
SCHÜTTE			
064.08.00	SF 13	6°	24
064.21.00	SE 16 - SF 20	6°	28
064.22.00	SE 25	6°	28
064.23.00	SF 40 - SF 42	8°	34
064.33.00	SD 25 - SD 32	8°	28
064.42.00	SD 50	8°	34
064.43.00	SD 63 - SD 80	8°	34
064.46.00	SF 26 - SF 32	6°	24
064.48.00	AD 40	8°	34
064.49.00	SF 51	8°	34
064.54.00	SF 67	6°	34
064.55.00	SF 26 L	8°	28
064.73.00	AG 20	6°	24
064.81.00	SF 81	8°	34
064.84.00	AF 42/51	8°	34
064.85.00	AF 26/32	8°	28/34
PITTLER			
064.25.00	PRB 8/25	8°	34
064.26.00	PRB 8/32 - PRC 6/32	8°	34
064.37.00	DAM 6/50	8°	34
064.39.00	DAM 8/32	8°	34
064.45.00	PRB 6/50 - PRC 6/50	8°	34
064.52.00	PRB 36/6	8°	34
064.64.00	PRC 36/6	8°	34
064.65.00	DAM 6/32	8°	34
064.71.00	PRC 100/4-72/6-50/8	8°	34
BSA			
064.59.00	2"	6°	28
064.68.00	2" 1/4	8°	34
ACME GRIDLEY			
064.12.00	16 m/m	6°	24
064.57.00	1" 1/4 - 6 M	8°	34
064.74.00	1" 5/8	8°	34
TOS / AN			
064.88.00	6/25 A	8°	34
064.89.00	6/40 A	8°	34
064.90.00	6/63 A	8°	34